

ORTHOSIS INNOVATION

Ortino

Orthosis Innovation





# Ortino

## WE ARE ORTINO

Technological developments and advanced production methods within the recent years have caused an enormous evolution in design and making of medical equipment in the modern world; especially for the Orthopedics (Orthosis & Prosthesis). Growth in customers' awareness on the various orthopedic products and their benefits for treating illnesses, along with changes in lifestyle & human activities, plus improved performance and utility of such products all together have made it an ever-expanding field with more requests for using advanced & expert orthoses day by day.

With the aim to produce and provide modern orthopedic products & services and also delivering the best products in a global scale, the worldwide brand of Ortino Corporation is known as one of the pioneer R&D organizations in the world which makes a variety of useful orthopedic products and delivers them all over the globe through its vast distribution system.

Ortino design and produce products according to the needs and requests of people. The global network of Ortino is trying to observe, measure and forecast the orthopedic needs in a global level, in order to design and produce the finest & most useful orthopedic tools. We hope that providing these advanced orthopedic products and equipment could take a small step for mankind in the realm of health and medical needs which we wish can ultimately lead to higher quality of health-care services for everyone.

# Ortino

## INDEX

3



**R&D**

5



**SPINAL ORTHOSES**

12



**HAND ORTHOSES**

18



**KNEE ORTHOSES**

23



**FOOT ORTHOSES**

27



**PROSTHESIS**





## Ortino Research & Development

The Research & development department in Ortino Medical Corporation began its work in 2018. Employing an elite group of experts in the field of Orthosis & Prosthesis began a new era in the history of the group's activities. We study and analyze needs in different related aspects and shine a promising light on the best-quality service horizons.

The findings of research and study of the orthopedic products market proved the existence of new challenges for the orthopedic-treatment specialists in order to have access to the luxury of the advanced high-quality equipment; hence, it became a priority in the R&D department of Ortino Medical's goals list to design advanced prefabricated products for being used in the field of orthosis and prosthesis.

Using the latest design methods and the concept of human Body Ergonomics, our colleagues began to re-design and re-make these different advanced orthoses which have global quality. Different stages of production including the study and evaluation of the products which are already present within the global market, product selection, the design and production of the orthosis, presenting the products to the clients and orthopedics experts & doctors, all are being carried out within a precise pragmatic framework to make Ortino recognized as one of the most successful brands in this industry all over the world.

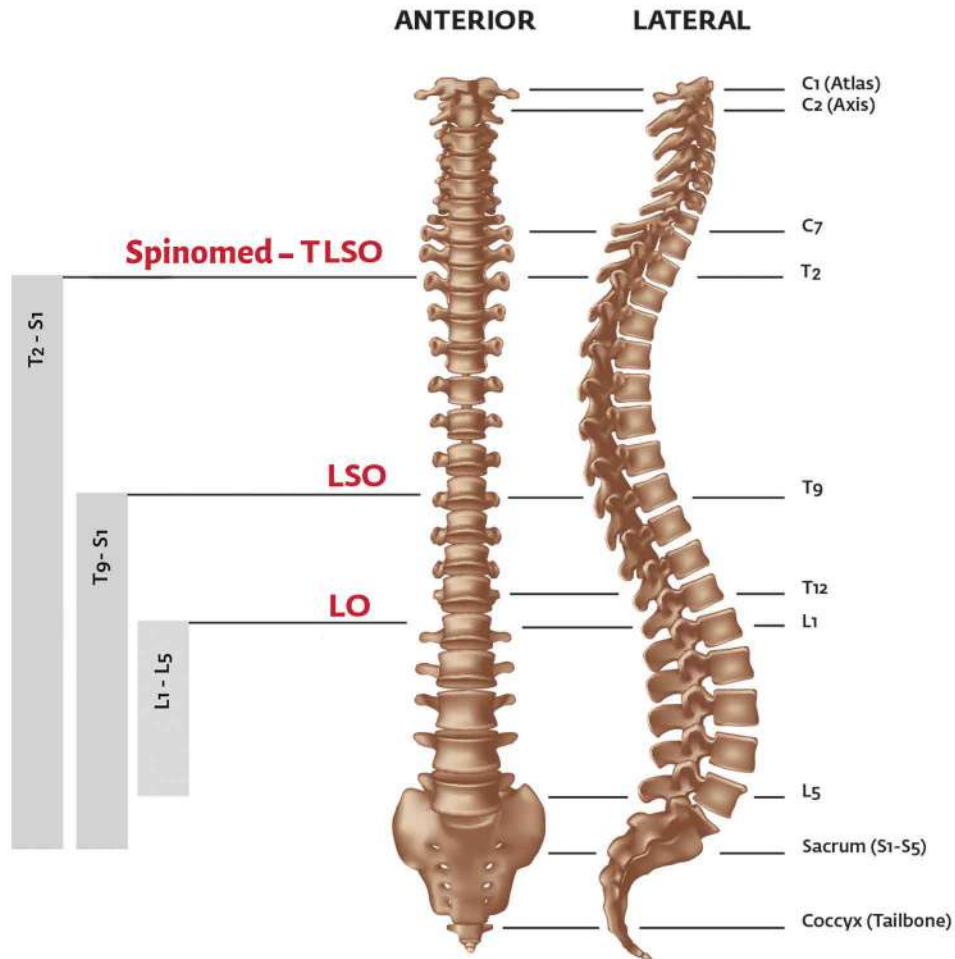




# SPINAL ORTHOSES



# ORTINO RANGE OF SPINAL SUPPORT



**LO Brace**



**LSO Brace**



**TLSO Brace**



**Spinomed**



The unique design of **Ortino** spinal column orthoses made them one of the best spinal column products all over the world. Inspired by the best prefabricated spinal column products in the global market, the Ortino engineers in charge of designing products have been selecting, designing and producing spinal column orthoses in a variety of models which is second to none in terms of supporting the spinal column curves. Having access to the best raw materials and latest production technologies, along with benefitting from great orthosis experts and colleagues in the whole process of selecting the product and identifying the needs and current shortcomings (flaws) within the global market, all together have contributed to the emergence and presentation of a list of best products in the field of prefabricated spinal column orthoses. Having an anatomic design, **Ortino** orthoses do a great job of protecting the spinal column and keeping it stable.

Ortino spinal column orthoses are in fact mechanical systems that are used to provide external pressure on certain anatomic spots; the results would be protection of spinal column or fixing it in a motionless state.

The aims of using **Ortino** prefabricated orthoses can be categorized into two major types:

- Controlling the pain by limiting motion in parts of spinal column and shifting the weight away from the discs and other parts of the vertebra column.
- Stabilizing the vertebra column structures through maximum demobilization as a function of the orthosis.







## LO brace

### INDICATIONS

- Lower back pain, sprains, or strains
- Spondylolisthesis (Slip of the lumbar vertebrae on top of each other)
- Postoperative protection of the intervertebral disc herniation
- Severe stretching of the muscles and ligaments of the back
- Osteoarthritis (inflammation of the bones and cartilage)
- Osteoporosis (osteoporosis)

### FEATURES

- Pulley system to apply uniform force
- Memory foam pad
- Modular Design, Low profile-fit
- Lightweight, Breathable Mesh Material, Washable
- Easily Adjustable Support



LO Brace



Memory foam pad





## LSO brace

### INDICATIONS

- Intervertebral disc herniation
- Pre & Post-Surgery Pain
- Intervertebral disc herniation
- Osteoarthritis
- Osteoporosis
- Spinal Stenosis
- Chronic Back Pain

### FEATURES

- Pulley system to apply uniform force
- Comfort Foam: Conforms to the unique contours of a patient's body, adjusts instantly to individual movements.
- Adjustable Belt Wings: Modifiable belt accommodates varying patient body structures for optimal fit.
- Modular Design: Step-up / Step-down design allows for single brace use through rehabilitation and recovery.
- Lightweight, Breathable Mesh Material
- Easily Adjustable Support



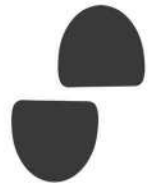
LO Brace



LSO pad



Abdominal Pad



Lateral Pads



# TLSO brace

## INDICATIONS

- Kyphosis
- Mild Scoliosis - Lordosis
- Intervertebral disc herniation
- Pre & Post-Surgery Pain
- Osteoarthritis
- Osteoporosis
- Spinal Compression Fracture
- Chronic Back Pain
- Postural Alignment
- Spinal Stenosis
- Swayback

## FEATURES

- height adjustable mechanism
- Back Support Jacket Relieves a Variety of Conditions
- Pulley system to apply uniform force
- Adjustable Belt Wings: Modifiable belt accommodates varying patient body structures for optimal fit.
- Modular Design: Step-up / Step-down design allows for single brace use through rehabilitation and recovery.
- Lightweight, Breathable Mesh Material
- Easily Adjustable Support



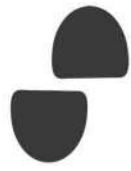
LO Brace



LSO pad



Abdominal Pad



Lateral Pads



TLSO pad





## Spinomed

### INDICATIONS

- Osteoarthritis (bone and cartilage inflammation)
- Back bending and kyphosis: This product keeps the spine in its standard and natural state and is a very suitable solution for treating back bending.
- Osteoporosis: maintaining the structure of the spine in the face of osteoporosis in old age
- After surgery: stabilization of pelvic, lumbar and back vertebrae in the rehabilitation period after surgery
- Spine Support: Effective stabilization and relief of the spine for protective-functional therapy
- Supporting the spine in the condition of back muscle weakness

### FEATURES

Osteoporosis patients suffer from several postural problems in the event of a fracture of the vertebrae of the lumbar spine. One of the most important of these problems is bending and humping in the back and lumbar region. Vertebral fractures can lead to curvature of the upper back so that the upper body of the patient leans forward. This is where Spinomed's advanced medical belt uses the principle of biofeedback to deal with this problem. By using its unique design, it corrects the alignment of the spine and helps the patient to stand properly.



**HAND ORTHOSES**





## Thermoform Wrist Brace

Thermoform Wrist Brace is a revolutionary, thermoformable technology, offering an adjustable and re-formable solution for the wrist. The Exos advanced technology allows you to mold the brace for the best possible fit for maximum comfort and stabilisation. The thermoformable material is light-weight, waterproof and can be easily cleaned.

### INDICATIONS

- Protection of injuries to the wrist
- Carpal bone fractures
- Non-displaced fractures
- Post-operative support

### FEATURES

- Thermoformable - prepared for application using a waterless, dry-heat preparation system.
- Quick-Fit system
- Waterproof/washable - can be worn during bathing and swimming.
- Antimicrobial tested - reduces the build up of bacteria and odor.
- Reformable/custom fit - molded to the patient to achieve a custom fit that can be molded and remolded as desired, quickly and easily, to achieve the perfect fit.
- Sawless removal - no loud or frightening cast saws are required for the removal.
- Lightweight - significantly lighter than plaster and fiberglass casts.
- Radiolucent - brace does not need to be removed for X-ray imaging.



## Bionic Wrist Brace

The Bionic Reel-Adjust Wrist Brace is a lightweight slip-on wrist brace that can help support and ease symptoms associated with Carpal Tunnel Syndrome (CTS), Mild Sprains and Strains, Tendinitis, & Wrist Instabilities.

Designed to support the wrist during activities without restricting movement of the fingers, the Bionic Reel-Adjust Wrist Brace is constructed with stretch knit material and spandex under-sleeve which delivers compression, breathability and comfort.

### INDICATIONS

- Wrist instability
- Immobilization after wrist injuries (fracture, dislocation)
- Prophylactically in sport

### FEATURES

- Quick-Fit closure system applying for excellent fit, convenience, durability
- Anatomically-contoured aluminum palmar splint
- Immobilization of the wrist and thumb
- Breathable open cell foam material





## Elbow Tennis Brace

The Sports Elbow Strap provides relief of the forearm muscles by delivering targeted compression during sporting activities, particularly racket sports. The strap counteracts overloading forces and helps prevent long term injuries, including tennis elbow and golfer's elbow. A brace made of semi-rigid breathable fabric with the Ortino® closure system for quick and easy adjustment.

### INDICATIONS

- Tennis elbow (Lateral epicondylitis)
- Golfer's elbow (Medial epicondylitis)
- Tendonitis and osteoarthritis

### FEATURES

- Designed for better fit as sporty style.
- The Quick-Fit system provides micro-adjustable compression and stabilization on the elbow.
- Adjustable and movable pressure pad for stability and support as Tennis elbow or Golfer's Elbow.
- The Quick-Fit system provides the easy way to the user to adjust the compression power by turning the dial.





## Post-Op Elbow Brace

The ROM (range of motion) Post-Op Elbow Braces are for treatment of elbow injuries requiring short term stabilization, as well as for post-surgical fixation and range of motion control. Available with different options the ROM Post-Op Elbow braces feature lightweight yet sturdy aluminum bars, single or dual hinges, shell extensions and hand extensions, and of course the ROM hinge with extension and flexion stops.

### INDICATIONS

- Elbow reconstruction
- Ligament and tendon repairs
- Surgical repair of a fracture and biceps repair
- Stable fractures
- Mild to severe soft tissue injuries
- Conservative treatment of elbow dislocation or luxation

### FEATURES

- ROM hinge
- Easy-to-adjust hinge (Dial adjustable from -10 to 120 degrees flexion)
- Slide-to-Size struts for customized fit
- Lightweight frame with comfort pads and adjustable straps for optimum fit.





# KNEE ORTHOSES



## Rebound Dual Knee Brace

This brace works well to speed recovery from various instabilities, including ACL and MCL. The knee brace features a low-profile polycentric hinge with stop options to ensure stability and support while you move. This brace enhances stability and accommodates the user's height, helping to ensure the perfect fit and enabling adjustment for varus/valgus alignment.

### INDICATIONS

- Supports ACL, MCL, LCL, PCL or combined instabilities
- Ligament instabilities with osteoarthritis

### FEATURES

- Lightweight, Breathable foam pads
- Polycentric hinge for stability, durability and low-profile design
- Improved System with slide-to-size height adjustability or varus/valgus correction on the upper frame
- Upgraded tool-free Smart Dosing Kit for fine-tuned pain management and offloading
- Optional PCL kit accessory for support of the PCL



Height Adjustable



Adjustment of the Lateral angle





## Post OP Knee Brace

The Post OP Knee Brace is remarkably quick and easy to apply, allowing efficient use of time. The anti-migration foam and dynamic suspension frame naturally contour this lightweight brace to the patient's leg, providing a precise fit after surgery. Ortino POST-OP Knee Orthosis is designed to provide precise protection and support post-operatively for patients following knee procedures.

### INDICATIONS

- To aid immobilization and protected range of motion associated with ACL, PCL, LCL, and MCL surgeries and meniscal repairs

### FEATURES

- Easy-to-use design: Strap, tab and buckle design make post-op application and adjustment fast and simple
- Comfortably fits a wide range of patients
- Push button slider settings: Adjustments are easy and precise
- Ready to fit: Quickly fit patients right out of the box
- Optimal fit & stability: Bendable hinge bars help enhance varus/valgus contouring
- Lightweight strength: Strong yet lightweight design helps reduce brace migration
- Secure contact points: Enhanced ankle pads and strategically placed contact points between the leg and brace help reduce slippage



## Unloader Knee Brace

The Unloader Knee Brace is a single upright orthopedic hinged knee brace with adjustable rotational control for flexion and extension settings. Brace also provides a powerful lateral bracing system with unloading features for medial support to the knee. Lightweight and ergonomic design ensures superior fit. Universal size. Select left or right side.

### INDICATIONS

- Valgus / varus knee
- Knee instabilities
- Knee ligament derangement
- Ligament instabilities with osteoarthritis

### FEATURES

- height adjustable mechanism
- Unloading system reduces pressure on knee joint
- Universal
- 3-point leverage system – unloads medial compartment
- Adjustable range-of-motion (ROM) settings
- Lightweight design with advanced unloading system
- Breathable, and comfortable
- Easy application and removal with quick-release snaps
- Fully adjustable strapping supports universal fit





## Patella brace

Patella brace is used to treat chondromalacia of the patella, ligament injuries, Osgood-Schlatter syndrome, osteoarthritis, rheumatoid arthritis, runner's knee, and tendinitis, among others.

If you need a patella brace that covers the whole knee and provides necessary warmth and compression, you can try Patella Knee Brace.

### INDICATIONS

- Jumper's Knee (Patellar Tendonitis)
- Proprioception of the Knee
- Patellar Syndromes & Tendon disease
- Osgood Schlatter disease (Growing Pains)

### FEATURES

- Lightweight
- Fast And Easy Adjustable-Fit With One Hand
- Anatomical Designed patellar tendon pad for secure stability.
- Comfortable: Ventilated & Skin Friendly materials for user's comfortable use.
- Quick-Fit system: Easy & quick wear by full-open type hook & loop with The Ortino Dial.
- Bilateral and universal: Designed for better fit as sporty style.







# FOOT ORTHOSES





## Malleo Ankle Brace

The Malleo Brace is a premium ankle brace that offers a high level of support whilst still being light weight. Suitable for an ankle sprain, the low profile means it can be worn in any type of shoe. Additional straps and a metallic splint provide maximum stabilisation whilst the anatomical design and micro-aerated 3D fabric ensure optimum comfort. Fitting is quick and easy with the state of the art Quick-Fit lacing system.

### INDICATIONS

- Torn or torn ankle straps
- Ankle sprain and / or sprain
- Inversion trauma (supination)
- Eversion trauma (pronation)
- Arthrosis
- Unstable ankle

### FEATURES

- High support in combination with a very thin design
- Easy to adjust with the Quick-fit system
- Resistant and comfortable lightweight metal reinforcements
- Suitable for sports
- Slim low-profile design allows the brace to be worn in most types of shoes
- Wide opening offers easy application and removal



## Foot Drop Brace

The Foot Drop Brace is designed to help those suffering from neurological and orthopedic conditions, such as stroke, traumatic brain injury, MS and diabetes manage symptoms associated with foot drop to walk more comfortably. Flexible design works with all your favorite shoes.

### INDICATIONS

- Partial paresis of the foot lifters (foot drop)
- Damage to the nerve(s) of the lower leg
- Damage to the muscle(s) of the lower leg
- Decreased strength in the lower leg
- Difficulty raising the foot (foot lifter's paresis)

### FEATURES

- Quik-fit system
- Universal product: can be worn both left and right!
- Reinforced Velcro System
- Very durable material
- High wearing comfort
- Can also be worn during sports (cycling, walking, etc.)







## Foot Drop Plus Brace

The foot drop PLUS brace is a lightweight, uniquely designed foot drop brace/soft AFO designed to replace uncomfortable, stiff, or bulky splints that go inside the shoe. Can be worn with the majority of male or female shoe styles by using the accessory kit to enable footwear without eyelets to be modified.

Revolutionary double Quick-fit located on the ankle strap allows for quick and easy customization of the foot lift angle required for safe clearance.

### INDICATIONS

- Limited lower extremity movement and function leading to difficulty raising the foot.
- Ankle/foot weakness.
- Decreased foot sensation leading to decreased coordination.

### FEATURES

- Double Quick-fit system
- Resistant and comfortable lightweight metal reinforcements
- Fully adjustable
- Durable material
- Universal







**PROSTHESIS**





## Trustep

Trustep Carbon Toe or Prosthetic Leg is a type of artificial leg that is specifically designed for people who have lost a leg or lower leg or need an artificial leg.

This product is a high-tech artificial leg made using carbon materials and modern technologies. Trustep is built using advanced technologies and precision engineering to help people improve their foot movement and function and engage in everyday activities. Trustep is made of various materials including engineered polymers, advanced rubber dampers, carbon fiber and advanced alloys. This artificial leg has many adjustable options that allow people to adjust and adapt to their needs regarding the flexibility and movement of the artificial leg.

### FEATURES

- Lightness and strength
- Flexibility and adaptation: Trustep carbon claw has the ability to adjust and adapt to individual needs. This flexibility allows people to adjust the prosthetic leg in a way that best meets their needs.
- Ease of use: Trustep carbon claw is designed for easy use and convenience of users.
- Tri-Axial movement capability: This capability creates a more natural and anatomically better movement in the paw and provides a better fit with the ground while walking.
- Various adjustments: This prosthetic leg may have adjustable settings that allow the individual to adjust and match their needs regarding the flexibility and performance of the prosthetic leg.
- Advanced shock absorbers: The advanced shock absorbers and dampers in this product absorb various pressures that are applied to the paw while walking.



## ENVIROHELL - TRUSTEP

Trustep carbon toe cover is used as external protection for artificial leg. This cover is made of advanced soft and flexible materials and by placing it on the artificial leg, it can protect hard materials and sharp surfaces. In addition to providing protection, this cover can add to the beauty and style of the artificial leg.

### FEATURES

- **Protection:** The cover helps the prosthetic leg to be protected from bumps and scratches. This can increase the useful life of the artificial leg.
- **Comfort:** This cover is made of advanced polymer materials that provide more comfort to the person.
- **Style and Beauty:** This cover allows a person to add their own style by choosing their favorite color and design on the artificial leg. This can give a person more confidence.
- **Easy changes:** by using the cover, people can change the appearance of their artificial leg and be more compatible with different situations and environments.





# Ortino

Orthosis Innovation

[WWW.ORTINOMED.COM](http://WWW.ORTINOMED.COM)

